



香港中文大學校友會聯會張煊昌中學
CUHK FAA Thomas Cheung Secondary School



天然中英諧音



Natural Homophones



伍德基
T.K.Ng

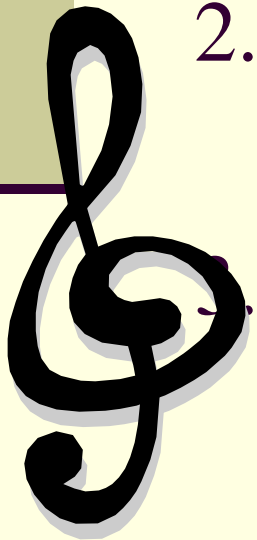
中文字與英文字音義相近者甚多，原因有：



1. 先中後英，或先英後中的中英音譯字。

2. 純屬巧合。

3. 中英同源？尤在自然環境上。



A. 人物 (1)



嗲嗲

daddy

爸爸

papa

父

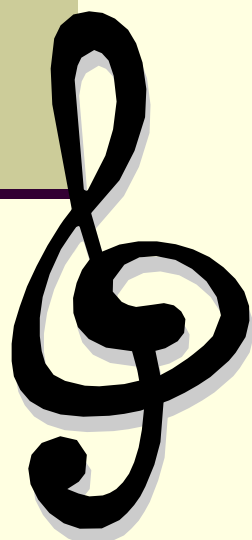
father

母

mother

媽媽

mamma



A. 人物 (2)



伯 (兄弟)

brother

姊妹

sister

妹 (少女)

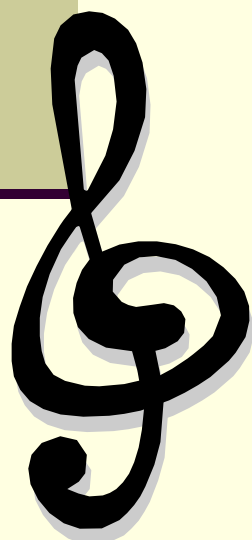
maid

人氏 (男人)

man

婦人

woman



A. 人物 (3)



子 (孫)

son

君主

king, queen

老

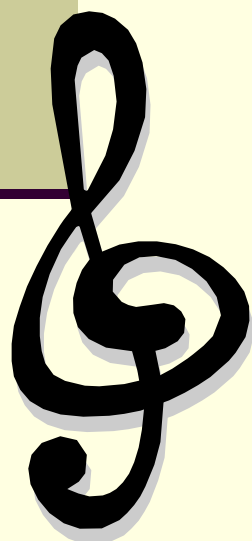
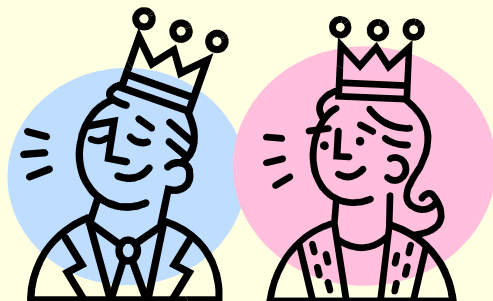
old

親

kin

汝(你)

you



B. 生物 — 動植物 (1)



牛 (母牛)

cow



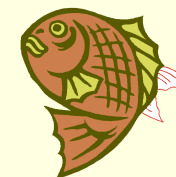
馬 (母馬)



mare

魚

fish



蛇



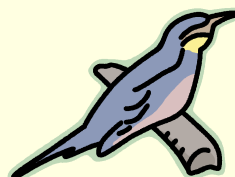
snake

蜜 (蜂)

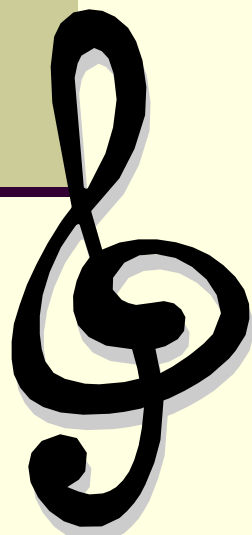
bee



雀



bird



B. 生物 — 動植物 (2)



樹

tree

花

flower



葉



leaf

麥

malt

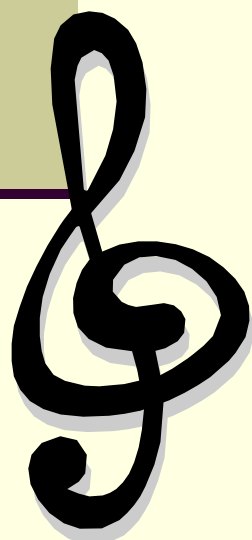


脂

grease

皮 (果皮)

peel



C. 軀體 (1)



眼

eye



耳



ear

口

mouth



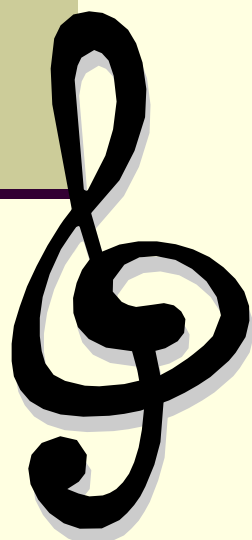
齒



teeth

背

back



C. 軀體 (2)



髮 (羽毛)

feather



鬚



shag

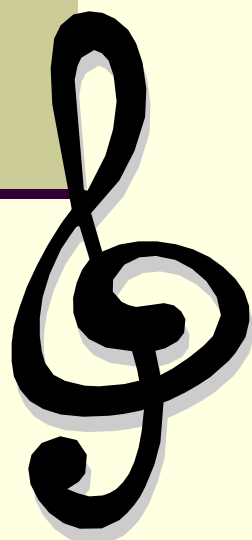
涕

tear



屎

shit



D. 動作 (1)



視

see

啜

sip

鳴

woe

浮

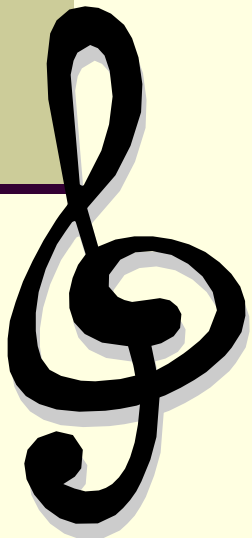
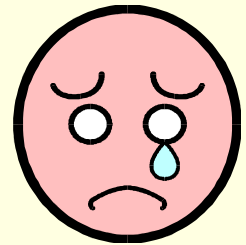
float

買

buy

給

give



D. 動作 (2)



奔 (跑)



run

飛

fly



食



eat

息 (睡)

sleep



踢

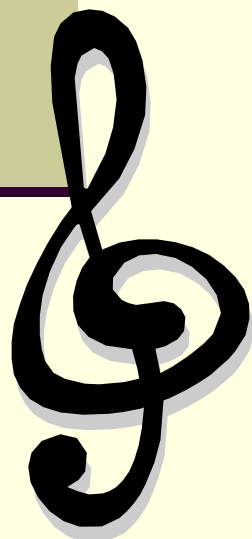
kick

蹦

bump

唱

chant



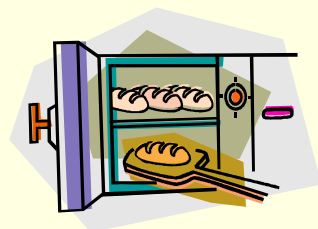
D. 動作 (3)



拍

pat

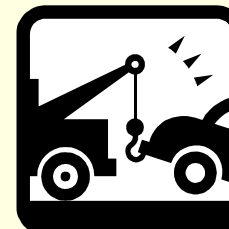
焙



bake

拖

tow



綁

bond

領(導)

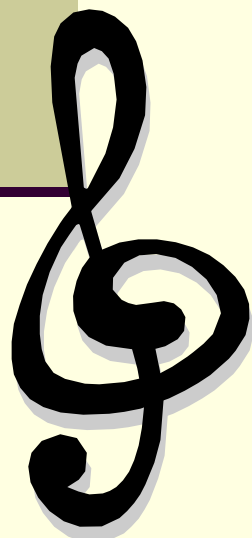
lead

切

chip

瞥

peep



E. 名詞/形容詞/動詞 (1)



路

road

簿 (書)



book

屋/宮 (家)

home



沙

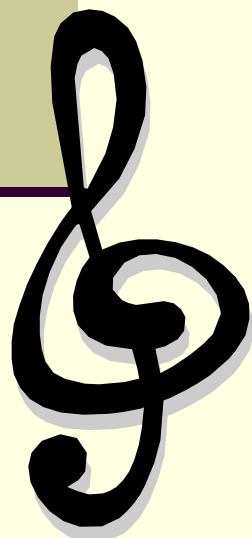
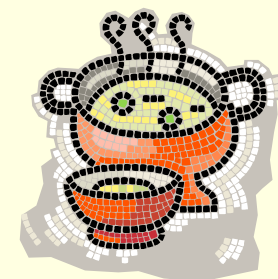
sand

籽

seed

煲 (碗)

bowl



E. 名詞/形容詞/動詞 (2)

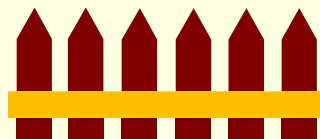


碟

dish



藩(籬)



fence

物

matter/material

熱

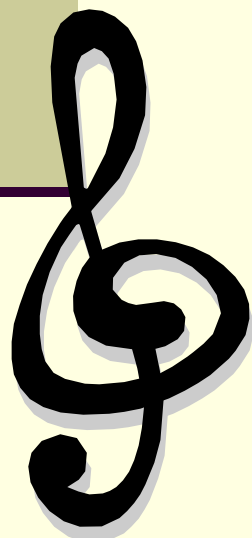
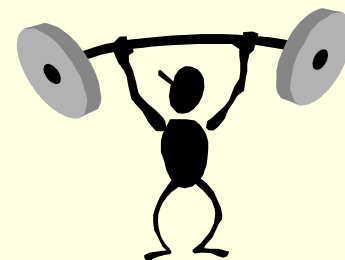
heat

壯

strong

聖

saint



E. 名詞/形容詞/動詞 (3)



病

pain



平

plane

協 (助)

help

慚 (愧)

shame

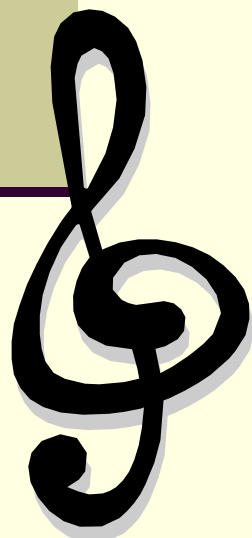
赤 (紅)

red



名(字)

name

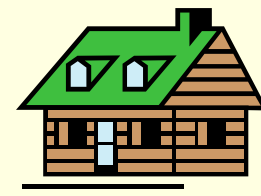


E. 名詞/形容詞/動詞 (4)



樓

house



閣

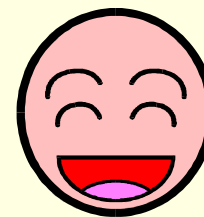
court

報

post

歡 (喜)

fond

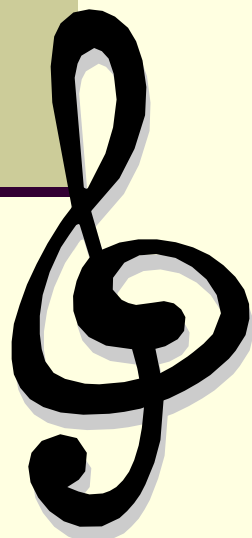


不

but

博 (大)

broad



E. 名詞/形容詞/動詞 (5)



泛

pan

列 (出)

list

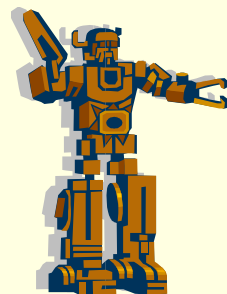
模 (型)

mould

鈴



ring



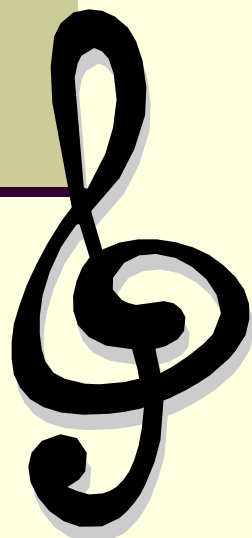
帶

tie



易 (容易)

easy



E. 名詞/形容詞/動詞 (6)



抵賴

deny

依賴

rely

無(毋)

no

莫

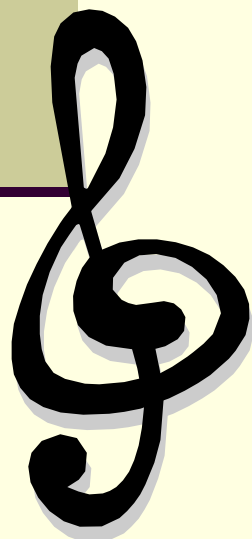
not

碳

tar

裂

leak



E. 名詞/形容詞/動詞 (7)



邊

rim

晒

shine

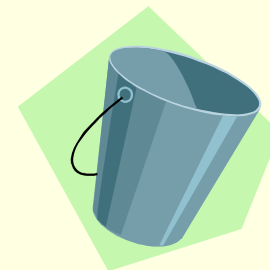


曝

expose

桶

tun



刻

carve

泊

park

